



Alberta Elevating Devices
& Amusement Rides
Safety Association

Information Bulletin No. IBE23-002

May 12, 2023

Subject: Welding Repairs and Design in conformance with ASME A17.1/CSA B44

Issue: What responsibilities do Elevator Service Providers have when repairs to new and existing equipment involve Welding or Design of Welding?

Requirement: ASME A17.1-2019/CSA B44:19 clauses 8.6.2.2 and 8.7.6.1.9 require Welding and Design of Welding to conform to 8.7.1.4 and 8.7.1.5.

This includes parts on which the support of the car, counterweight, escalator, or moving walk depends, including driving machines and trusses, girders, and tracks of escalators and moving walks.

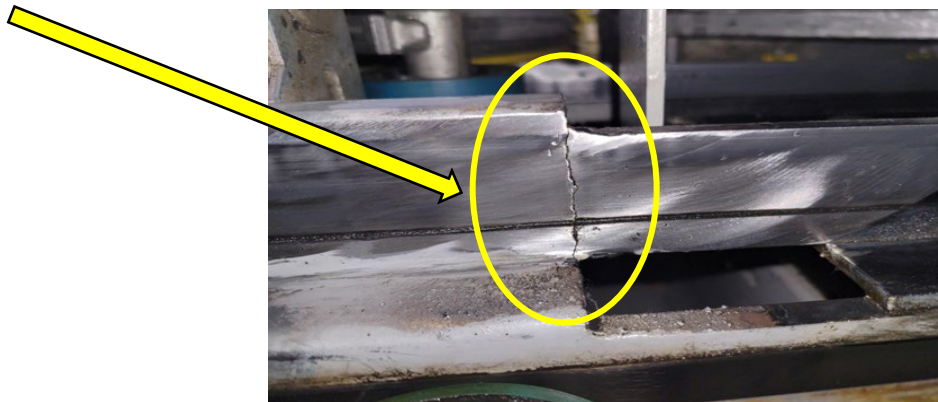
Qualification and design requirements from Section 8.8 must be met. Welders making these repairs in Alberta must be CWB Certified to the requirements of CSA W47.1 and meet the design and procedure requirements of CSA W59, or other CSA requirements for other types of materials used.

When “indications” or “cracks” are found on components identified as critical to the safe operation of an elevating device, Elevator Service Providers (EDSPs) planning repairs must remove the elevating device from service, consult with either the Original Manufacturer or Alberta Professional Engineer and contact a Safety Codes Officer within AEDARSA.

Repair Procedures required by the Original Manufacturer, or procedure stamped by an Alberta Professional Engineer must be submitted to AEDARSA prior to starting work. Any requirements for NDT, must be followed.

Background:

“Cracks” found on Escalator Tracks as shown below are also subject to the requirements above.



Implementation:

This information bulletin is effective immediately.

Original Signed by:

Dean McKernon VP of Operations, AEDARSA

| | | |
|-------------------|------------------------------------------------------|----------------------------------------------------------|
| TYPE: Information | DESCRIPTION: Repairs – Welding and Design of Welding | REGULATION: <i>Elevating Devices Codes Regulation</i> |
|-------------------|------------------------------------------------------|----------------------------------------------------------|